

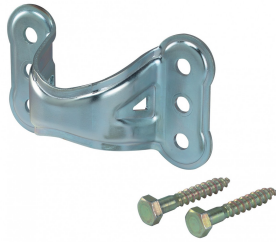
Order number: 21410003**Open text field 1:**

Suitable for mounting masts with a permissible bending moment of 1650 Nm

Hot-dip galvanised

Suitable for straight and inclined installation

With fastening screws

Hersteller: Kathrein

ZTU 160

Product information "ZTU 160"

Mast clamp 60 mm - For straight and inclined installation - Hot-dip galvanised - Complete with fastening screws

Type:	ZTU 160
Order no.:	21410003
Suitable for mast diameter:	60 mm
Hole diameter of attachment points:	11 mm
Packaging unit/weight:	10/3,9 St./kg